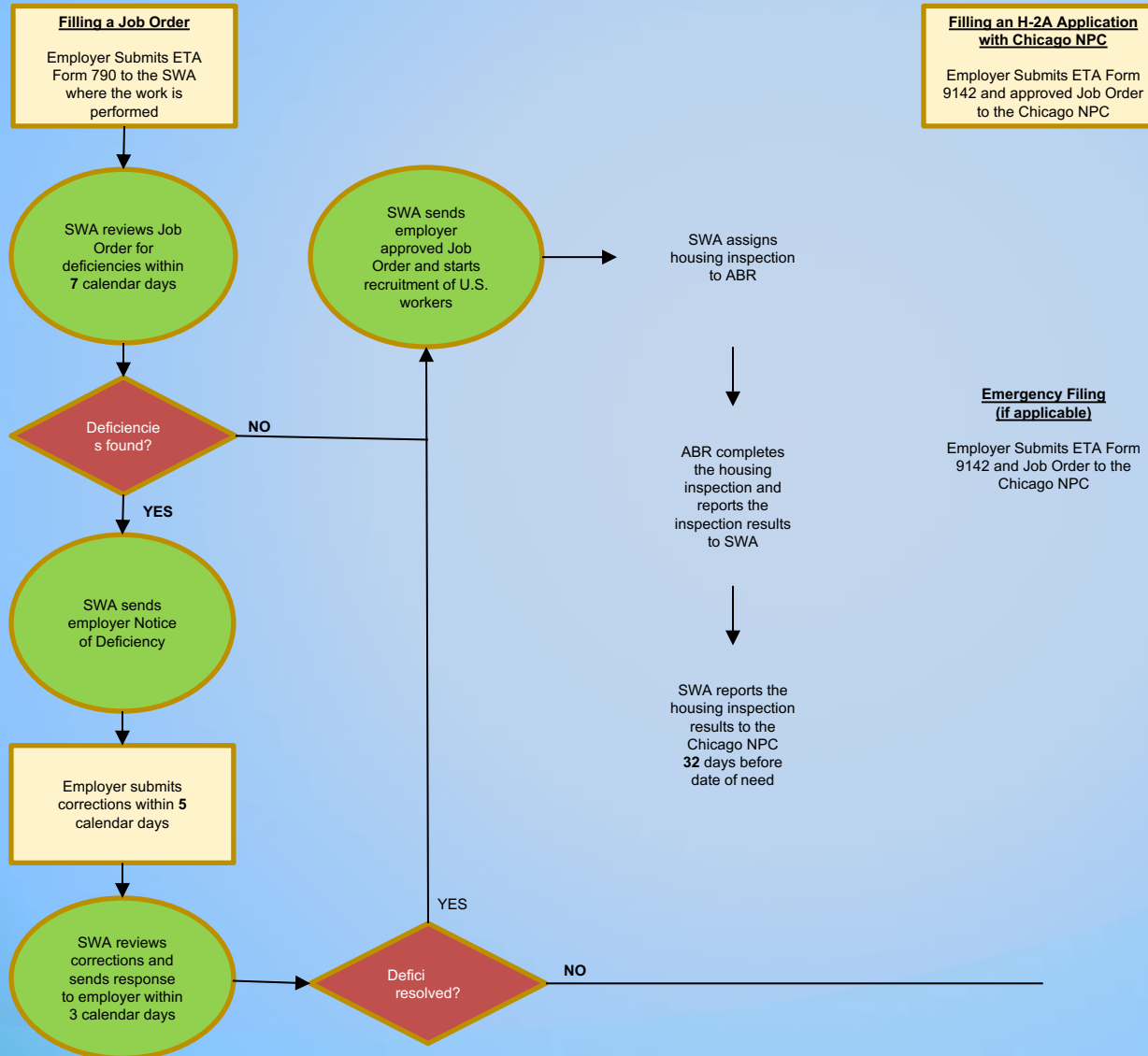


Foreign Labor and Agricultural Outreach Group Agricultural Services Unit

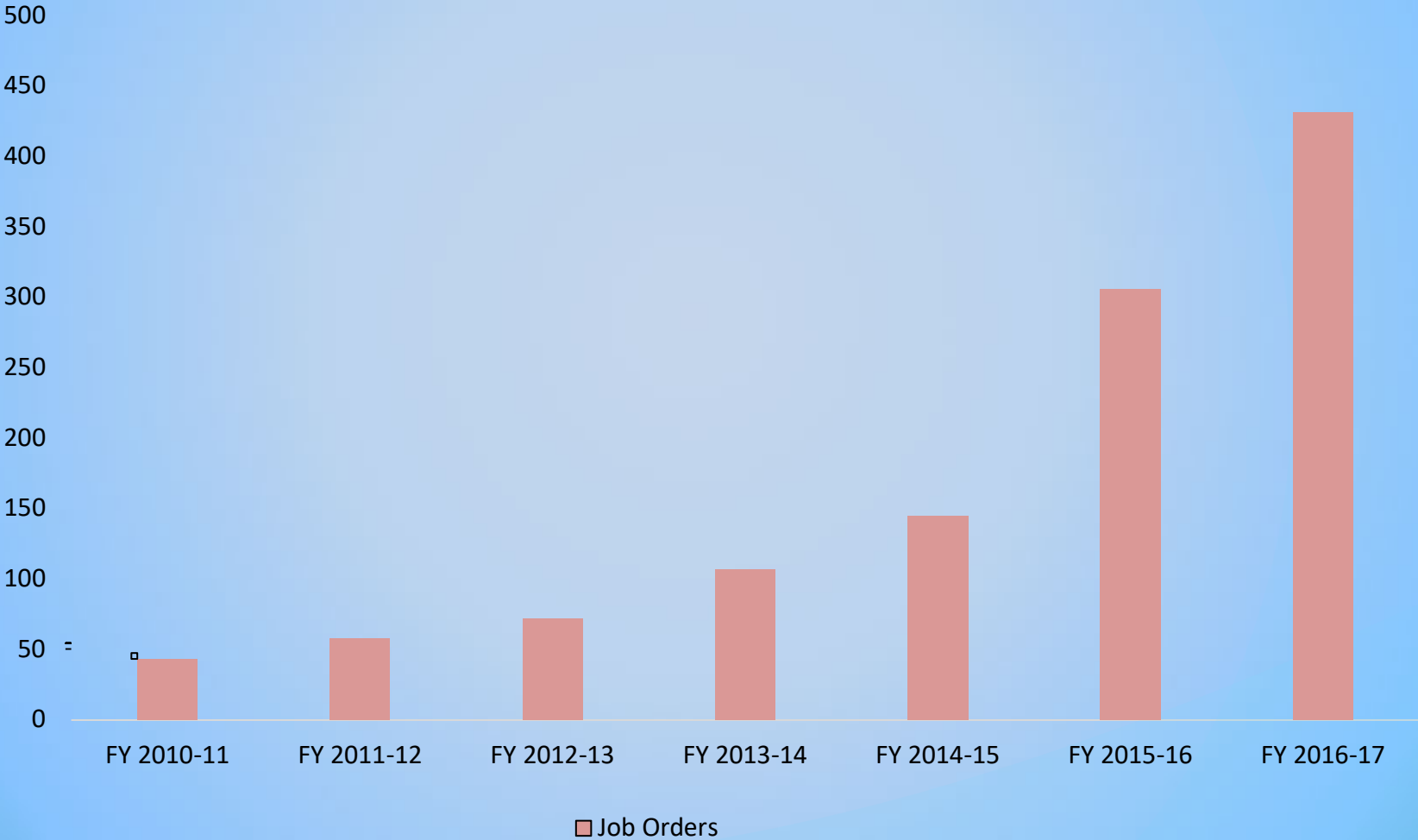
April 13, 2018

H-2A Application Process Flow Chart

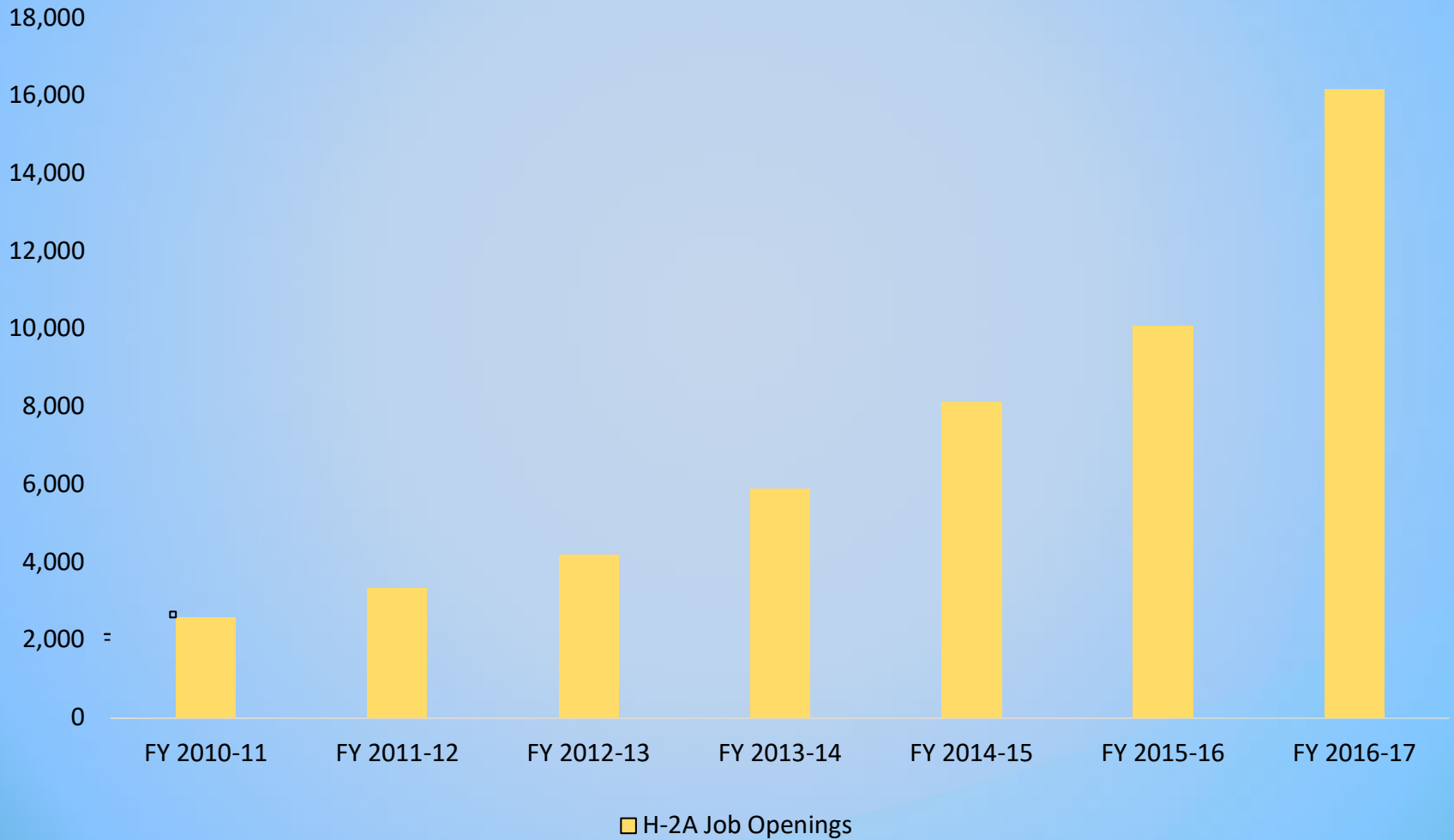
75-60 days before the date of need



H-2A Job Orders Processed

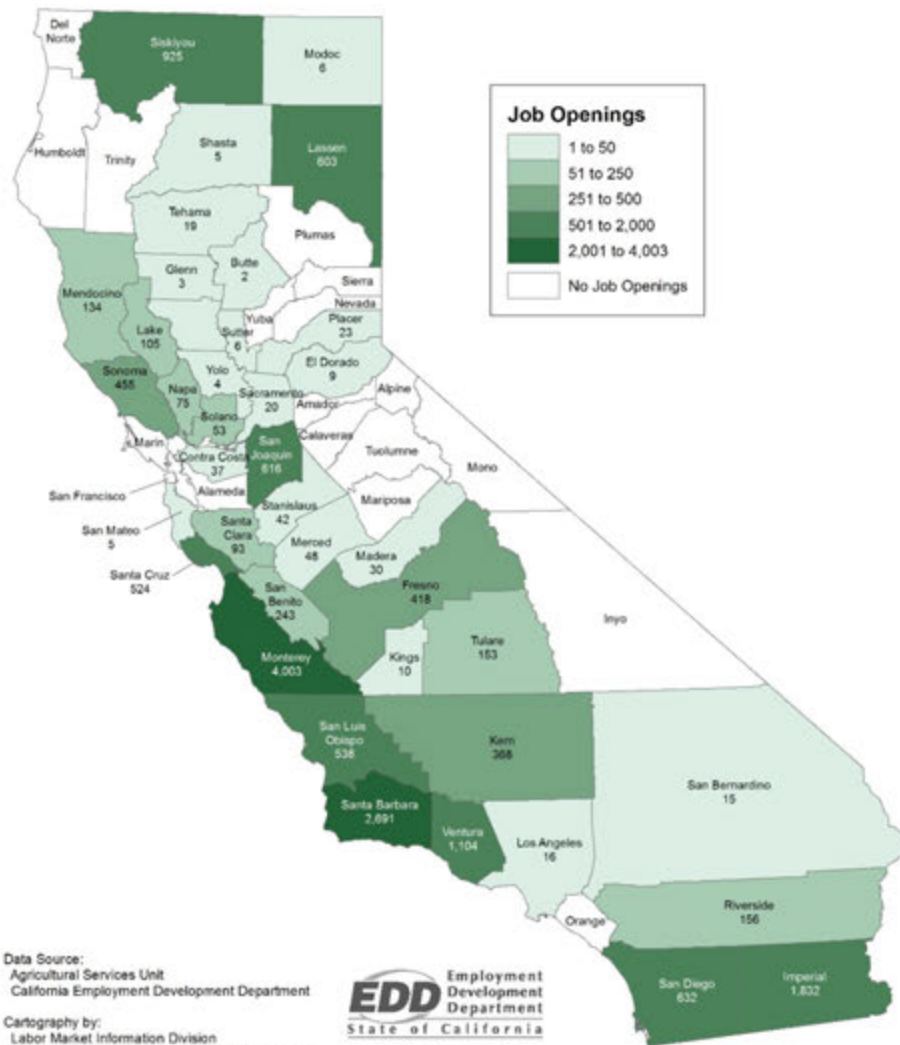


H-2A Job Openings in CA



Job Openings in H-2A Program

Federal Fiscal Year 2016 - 2017



Data Source:
Agricultural Services Unit
California Employment Development Department

Cartography by:
Labor Market Information Division
California Employment Development Department
<http://www.labormarketinfo.edd.ca.gov>
October 2017

EDD Employment Development Department
State of California

LaborMarketInfo

**Review of Job Openings FY 2016-17
(% of total certified)**

**Top 10 Employers
in California**

Fresh Harvest, Inc.	3,364	21.0%
Elkhorn Packing Co., LLC	1,653	10.3%
Tanimura & Antle Fresh Foods, Inc.	1,381	8.6%
Sierra Cascade Nursery, Inc.	1,309	8.2%
Rancho Nuevo Harvesting, Inc.	1,167	7.3%
Foothill Packing, Inc.	510	3.2%
Peri & Sons Farms of CA	496	3.1%
West Coast Tomato Growers	496	3.1%
A. Oseguera Company, Inc.	451	2.8%
Munger Bros., LLC	387	2.4%

**Review of Job Openings FY 2016-17
(% of total certified)**

Top 10 Crops in California	Mixed Vegetables	4,248	26.5%
	Strawberry	3,521	21.9%
	Berries	1,915	11.9%
	Lettuce	1,171	7.3%
	Strawberry (Plant Trimming)	1,151	7.2%
	Wine Grape	782	4.9%
	Fruit/Nut Trees	546	3.4%
	Tomato	541	3.4%
	Onion	496	3.1%
	Celery	488	3.0%

Contact Us

Roman Diaz, ASU Manager

(916) 654-9315

Roman.diaz@edd.ca.gov

Francisco Macias, H-2A Analyst

(916) 654-9742

Francisco.macias@edd.ca.gov

H-2A General Inquiries

wsdcalh2a@edd.ca.gov

The EDD is an equal opportunity employer/program.
Auxiliary aids and services are available upon request
to individuals with disabilities.